

# How we are changing

As well as becoming smaller with fewer staff and buildings, we're changing the way we deliver many of our services



**We're focusing on prevention, by working with partners, including the NHS, to help people before any problems they are experiencing get worse.**

For example our Family Support service brings together schools, children's centres and community organisations to identify families who are experiencing problems at the earliest possible stage so that the right support can be provided



**We're making it easier for people to access services online whenever you need it**

We don't want people to wait on a telephone or in a long queue to reach us. You can do pretty much whatever you want online 24/7 on our website. Why not open a Haringey account today at [www.haringey.gov.uk/myaccount?](http://www.haringey.gov.uk/myaccount?)



**We're bringing new investment to the borough**

Regenerating areas of the borough brings jobs, housing, new businesses, community facilities and other opportunities. Did you know that Tottenham is now home to the National College for Digital Skills?

## Tell us your priorities

Please go online and complete a quick questionnaire at

[www.haringey.gov.uk/budget](http://www.haringey.gov.uk/budget) or pick up a copy in your local library or come to one of our events

**Muswell Hill Broadway** - St James Square

**Monday 24th October**, 1pm to 4pm

**Crouch End** - Town Hall Square, The Broadway

**Tuesday 1st November**, 3pm to 6:30pm

**Tottenham** - Marcus Garvey Library, Philip Lane

**Wednesday 9th November**, 1pm to 4pm

**Wood Green** - The Mall

**Saturday 12th November**, 11am – 2pm

**Hornsey Library** - Haringey Park

**Tuesday 15th November**, 4pm to 7pm

**Tottenham** - Outside Costa Coffee, High Road junction with West Green Road

**Thursday 17th November**, 1pm to 4pm

**Please tell us by Sunday 20th November**

**PRIORITY**

# Your Haringey Your Future

**Your council is changing with less money to spend. What are your priorities?**



**Introduction by Cllr Claire Kober  
Leader of Haringey Council**

**What would you do if your salary was cut by 40% but your household bills increased?**

That is the situation we find ourselves in after the Government cut our funding in real terms by 40%. At the same time demand for services, such as providing care for vulnerable people, has been increasing.

I said before that I am not prepared to manage decline which is why, while changing the way the council works, our schools continue to show significant improvements, we have more award-winning parks than ever before, investment has gone into leisure centres and libraries and we are working hard to bring new jobs, homes and business growth to the borough.

The job is getting tougher though which is why we need your help. On top of the savings already delivered, we still need to find more in the coming years. This is because demand is rising for specialist services such as caring for vulnerable adults, children's social care and emergency housing for homeless people.

Before we come up with new ideas for savings we would like you to tell us what is important to you. If you were in my shoes what areas of council spend would you prioritise? And what is less important to you?

To help we have produced this 4-page booklet to give you more information on our priorities, our budget and how it's changing. I would be really grateful if you could spend a few minutes to complete a short questionnaire. The information will help us in future decision making.

To take part go to

[www.haringey.gov.uk/budget](http://www.haringey.gov.uk/budget)

or pick up a questionnaire in your local library or come to one of our events – details of which are on page 4 of this booklet.

**Haringey**  
LONDON



# Our priorities

In 2015 we set out a 3-year-plan for improving Haringey. These are our priorities and what has been delivered.

**Give every child the best start in life**

Our schools are amongst the most improved in the country since 2010- with record GCSE and 'A' level results this year.

**Drive growth and investment which everyone can benefit from**

We're bringing in £1bn of new investment to the borough, from the restoration of Alexandra Palace through to the opening of the National College of Digital Skills in Tottenham.

**Enable adults to live healthy, long and fulfilling lives**

We're supporting vulnerable people to live as independently as possible in their own community.

**Create homes and communities where people choose to live**

Across Tottenham and Wood Green we're planning for 16,000 new homes to be built. Since April 2015 £45 million has been spent improving our existing housing stock with £20 million spent on wider improvements such as replacing lifts.

**Cleaner and safer neighbourhoods**

We have more award winning parks and open spaces than any other comparable borough.

# How our budget has changed

Since **2010** The Government has cut the money that we receive by around **40%** in real terms.

But we're **spending more money** on meeting rising demand for specialist services

We have 45% fewer staff with back office costs cut from £32.1 million to £18 million

We have a shared IT service with Islington and Camden

We own 12 fewer council buildings, while making better use of our remaining buildings - for example by bringing services together under one roof at Marcus Garvey library.

**We've saved £160m**

**Since 2013**

The number of adults receiving support for learning and mental health has risen by 17%

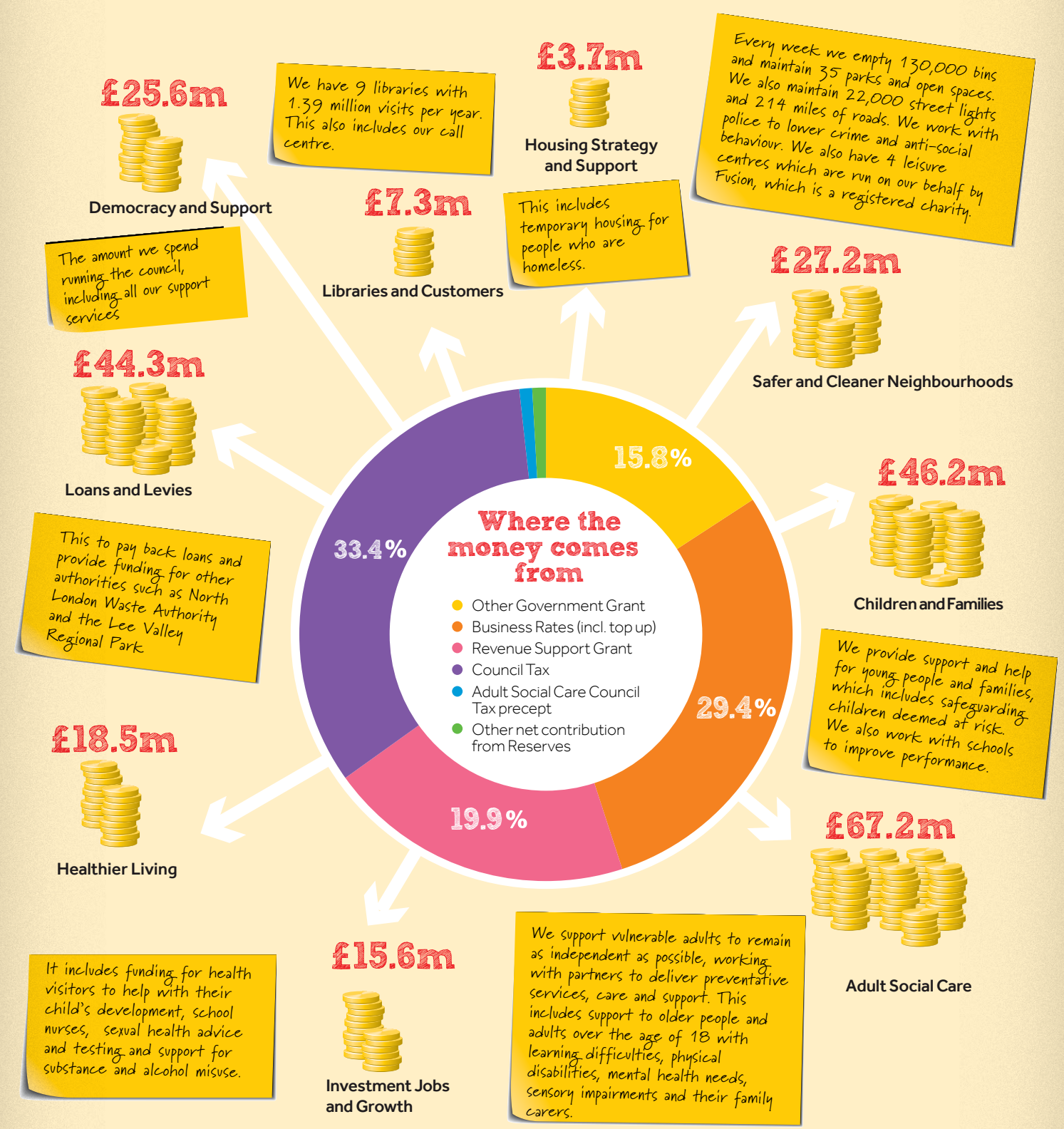
Unless we change the way we do things our spend on Adult Social Care is set to go up by a third from £61million, in 2013 to £91million by 2018/19

The number of people who have been made homeless and require emergency housing has risen by 11%

We're having to spend £8million more per year

# What we spend your money on

In 2016/17 our budget is **£255.6m**. This is how we are spending it.



**Did you know?**

Only about a third of the money we have to spend comes from your council tax payments? Council tax in Haringey has been frozen for 6 years out of 7 to keep your costs as low as possible and even if we did want to increase it we could only do so by 2% before holding a referendum.